



GO-400

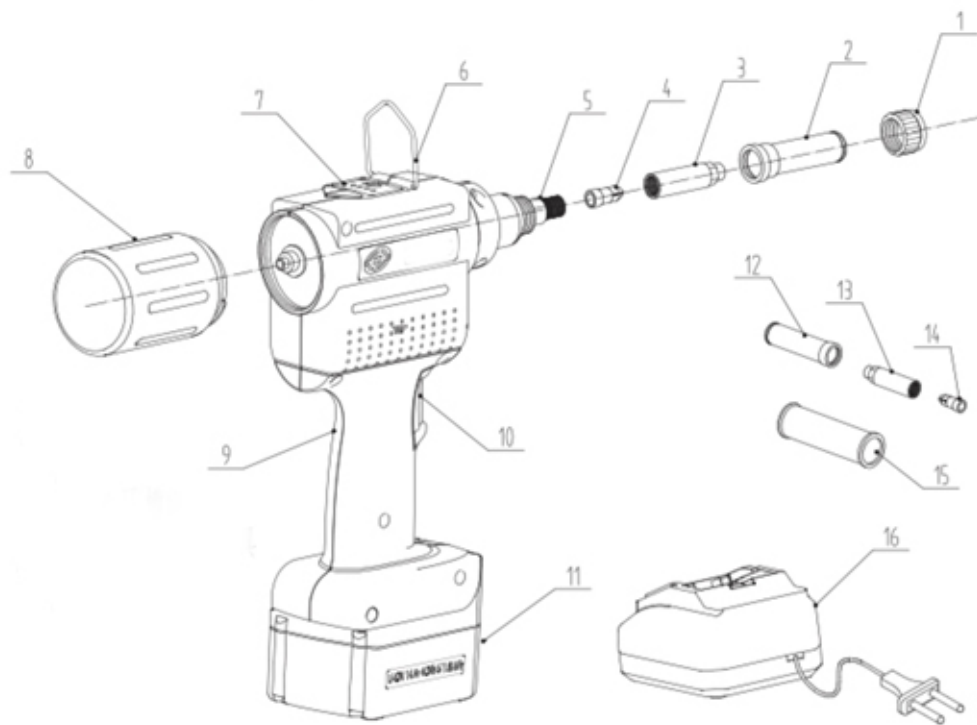
LITHIUM-ION CORDLESS
BATTERY TOOL FOR
LOCKBOLTS



1. Overview (See picture GO-400 figA)	4
2. GO-400 Lockbolt Tool.....	5
2.1 Specified use	5
2.2 Safety rules.....	5
2.3 Working scope.....	6
2.4 Specifications	6
2.5 Configuration/accessories.....	7
2.6 List of parts (see GO-400 figB)	8
3. Working mode.....	10
3.1 Tool preparation.....	10
3.2 Operation steps	10
3.3 Troubleshooting	11
4. Quick charger and battery	12
4.1 Specification	12
4.2 Safety information.....	12
4.3 Charge.....	13
4.4 Battery	14
4.5 Safety rules for using the charger	14
4.6 Safety rules for using battery	14
5. Maintenance and repair.....	15
5.1 Maintenance	15
5.2 Repair.....	15
6. Environmental protection	15
7. Daily maintenance	16
8. Safety usage.....	16
9. Warranty and CE certification.....	17
9.1 Warranty period and maintenance support	17
9.2 CE certification authenticity.....	18

1. Overview (See picture GO-400 figA)

GO-400 figA



No.	Standard code	Name	Qty	No.	Standard code	Name	Qty
1	2266000168	Nosepiece	1	9	2266000063	Mailfunction Warning Light	1
2	2266000169	Front Sleeve Set 1/4" (6.4 mm)	1	10	2266000171	Trigger	1
3	2266000102	Clamping Sleeve 1/4" (6.4 mm)	1	11	2266000083	Battery 4,0 Ah 57,6 Wh	1
4	2266000103	3-jaw Set 1/4" (6.4 mm)	1	12	2266000172	Front Sleeve Set 3/16" (4.8/5.0mm)	1
5	2266000170	Spring Sleeve Set	1	13	2266000085	Clamping Sleeve 3/16" (4.8/5.0 mm)	1
6	2266000050	Hook	1	14	2266000086	3-jaw Set 3/16" (4.8/5.0 mm)	1
7	2266000074	Battery Level Display	1	15	2266000101	Packaging for nosepieces	1
8	2266000052	Mandrel Collector	1	16	2266000058	Battery Charger Set	1
*Quick wear parts have been shaded.							

2. GO-400 Lockbolt Tool

2.1 Specified use

As specified in this manual, the lockbolt tool can only be used to install pin and collar lockbolt style fasteners.

The tool should be operated in an indoor environment where the air temperature is between 0-55°C/32-130°F and the relevant air humidity is between 20-100/100%.

Please note that the work area should be well lit and free of debris.

ALL SAFETY RULES MUST BE FOLLOWED!

2.2 Safety rules

Safety rules below must be followed to avoid electric shock, injury and/or fire:

- Do not overload the lockbolt tool. Please use it within the specified power range.
- Do not use the lockbolt tool in a humid environment or near flammable liquids or gases. Explosion hazard!
- Please note that the battery must be fixed near the handle.
- When the lockbolt tool is not in use or when it is serviced, please remove the battery from the tool.
- Do not use the lockbolt tool as a striking tool.
- Store the lockbolt tool in a dry and enclosed place and out of the reach of children.
- Always wear eye protection when operating the lockbolt tool. Personal protective equipment such as chemical protective clothing, gloves, hard hats, non-slip shoes, earplugs and fall arresters are recommended.
- Never block the vents of the motor, never insert anything into the vents.
- Prevent the lockbolt tool from falling when placing it on the workbench surface.

- Only use original parts for maintenance and repair.
- Have the lockbolt tool serviced only by a qualified professional. If in doubt, please mail the tool to the manufacturer.
- Do not rivet without a plate! The lockbolt may come out of the tool! Never point the lockbolt tool at yourself or others!

2.3 Working scope

dia 3/16", dia 1/4" (Ø 4.8/5.0 mm, Ø 6.4 mm) pin and collar lockbolt style fasteners

2.4 Specifications

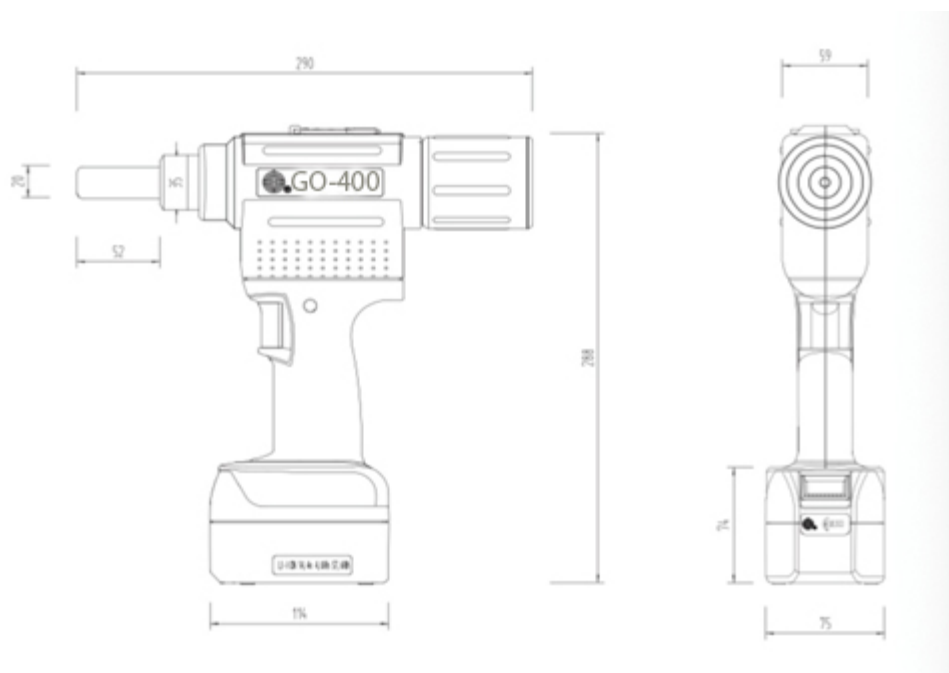
Tension: 4.496 lbf (20000N)

Weight: 3.70 lbs (1.68kg) [battery excluded] Stroke: 787" (20mm)

Power: 14.4V DC motor

Noise: < 80dB

Dimensions: see picture



2.5 Configuration/accessories

The front sleeve C6L Set with dia 1/4" [Ø6.4 mm] (2) is placed on the tool.

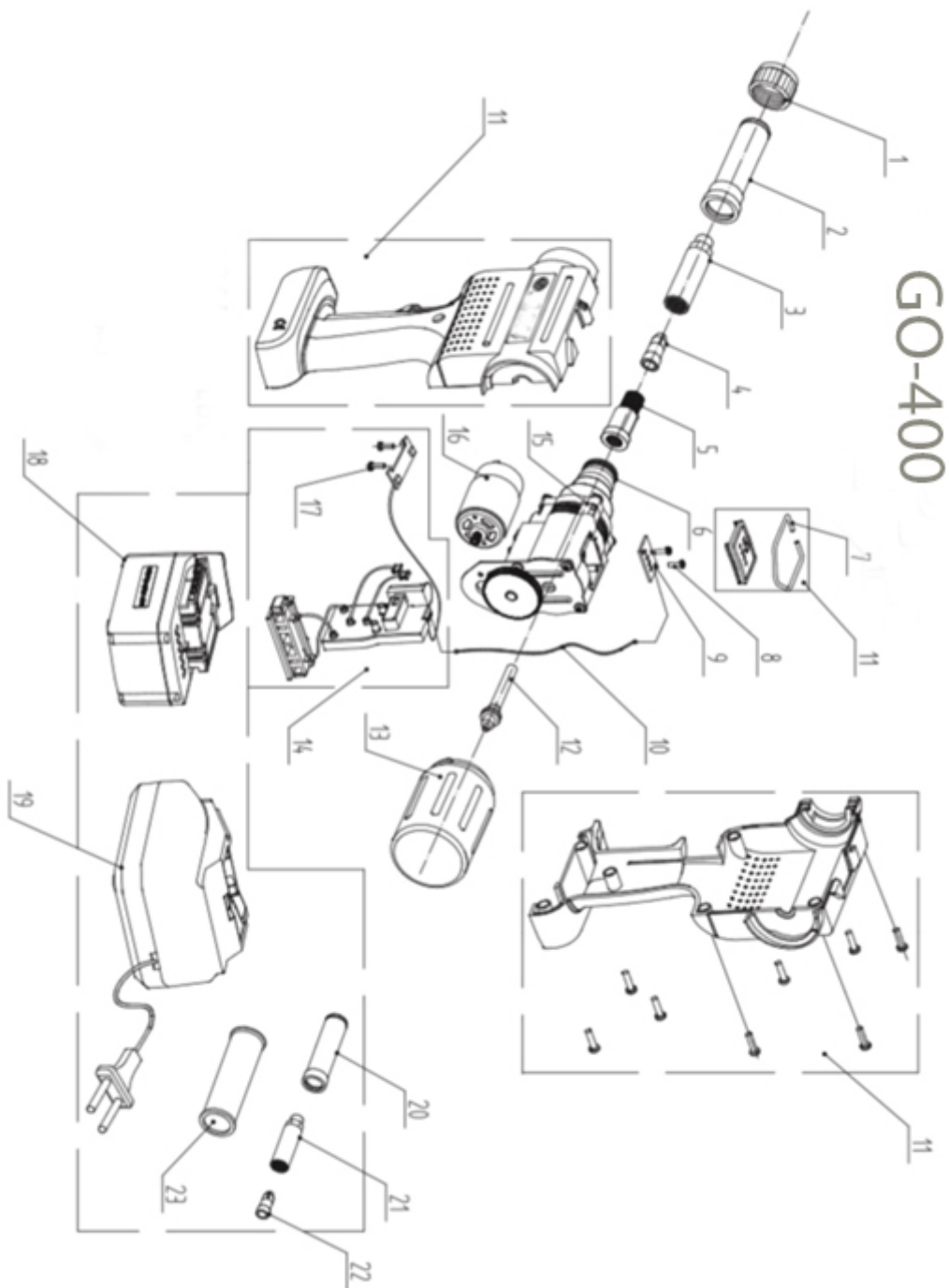
The case for nosepieces with dia 3/16" [Ø4.8/5.0 mm] (15), the front sleeve set (12), the clamping sleeve (13) and 3-jaw set (14) are inside the package.



Hook:	Folded and embedded in the housing
Quick charger:	100V-240V~50-60Hz
Quick battery:	14.4V; 4.0Ah; 57.6Wh

2.6 List of parts (see GO-400 figB)

No.	Standard code	Name	Qty	No.	Standard code	Name	Qty
1	2266000168	Nosepiece	1	13	2266000052	Mandrel Collector	1
2	2266000169	Front Sleeve Set 1/4" (6.4 mm)	1	14	2266000166	PCB Set	1
3	2266000102	Clamping Sleeve 1/4" (6.4 mm)	1	15	2266000167	Gear Box Set	1
4	2266000103	3-jaw Set 1/4" (6.4 mm)	1	16	2266000053	Motor	1
5	2266000170	Spring-Sleeve Set	1	17	2266000055	Machine Screws	2
6	2266000173	Connecting base	1	18	2266000083	Battery 4,0 Ah 57,6 Wh	1
7	2266000050	Hook	1	19	2266000058	Battery Charger Set	1
8	2266000047	Flat Cross Head Screw	2	20	2266000172	Front Sleeve Set 3/16" (4.8/5.0 mm)	1
9	2266000074	Battery Level Display	1	21	2266000085	Clamping Sleeve (4.8/5.0 mm)	1
10	2266000065	Display Cable	1	22	2266000086	3-jaw Set (4.8/5.0 mm)	1
11	2266000163	Tool Body Set	1	23	2266000101	Packaging for nosepieces	1
12	2266000165	Mandrel Release Tube	1				
*Quick wear parts have been shaded.				*No. 14, 15, 16 are structural parts			



3. Working mode

3.1 Tool preparation

- **Check battery level (*GO-400 figA*)**

Put the battery in. If the LED warning indicator blinks, it means the battery is empty. Turn the tool off and charge it by putting the battery into the charger.

Check the battery level display:

- 4 LED numbers (2, 4, 6, 8) are on, the power is $95\% \pm 5\%$;
- 3 LED numbers (2, 4, 6) are on, the power is $75\% \pm 5\%$;
- 2 LED numbers (2, 4) are on, the power is $50\% \pm 5\%$;
- 1 LED numbers (2) is on, the power is $25\% \pm 5\%$; charging is recommended.

When the tool is in use, battery level will be shown by pressing the switch of the battery level display (7).

- Choose the right nose piece (see **2.6**)
- Ensure the vent of the tool is not blocked;
- Install mandrel collector (8) properly;

3.2 Operation steps

3.2.1 Insert rivet stem into the prepared hole of the working component, install lantern ring and ensure it touches the surface of the working component neck to neck;

3.2.2 Insert rivet stem into the nose piece until it touches the arc surface of the lantern ring;

3.2.3 Press the trigger to start working and release after the “break-up” of rivet stem to reset the jaws;

3.2.4 Insert the rivet stem of another lockbolt, and tilt the tool backwards to allow the rivet stem to enter the mandrel collector.

The tool is able to activate an auto protection if overloaded. When the tool is overloaded, the failure indicator is on and the tool stops working. At this moment the trigger must be released to reset the jaws.

3.3 Troubleshooting

3.3.1 The lockbolt cannot be riveted

Causes	Remedies
4 LED indicators blink when the trigger is pulled, indicating the power is going to run off	Charging
Battery is damaged	Replace the battery

3.3.2 The lockbolt cannot be inserted

Causes	Remedies
Distance is not adjusted properly, jaws do not open neither	Nosepiece is worn or damaged, replace the nosepiece
Not choosing the right nose piece	Change to a new nosepiece
Burrs on jaws	Processing with a round file, replace the jaws

3.3.3 Lockbolt does not break-up

Causes	Remedies
Worn or damaged jaws	Replace the jaws

3.3.4 Lockbolt cannot be fixed

Causes	Remedies
Worn or damaged jaws or impurities among the jaws	Replace the jaws or remove impurities among the jaws

3.3.5 Failure indicator is on

Causes	Remedies
Jaws do not reset	Release the trigger
Overload	Check whether the lockbolt is within work scope of the tool
Overheat	Let the tool cool down naturally in the air
Battery is exhausted	Charge or replace the battery if necessary

Warning! When the remedies above cannot solve the problems, the tool must be repaired by professional technicians or mailed to the sales agent or manufacturer for repair.

4. Quick charger and battery

4.1 Specification

4.1.1 Quick charger

- Input voltage 100V-240V-/50-60Hz
- Output voltage 14.4VDC
- Output current 1.5A maximum
- Weight 1.04 lbs (0.47kg)

4.1.2 Quick charging battery

- Rated voltage 14.4V
- Battery type Lithium battery
- Battery capacity 4.0Ah
- Core number of battery 8 cores
- Output power 57.6Wh
- Weight 1.37 lbs (0.62 kg)

4.2 Safety information

4.2.1 Quick charger

Note:

Please observe the following safety precautions to avoid electric shock, injury and/or fire:

- The tool must be charged using the original “GOEBEL” battery and charger produced by the manufacturer;
- Check the plug, power cord and charger regularly. If there are any problems, please have it repaired by maintenance technicians or qualified professionals.
- Do not use the charger in a humid environment or near flammable liquids or gases. Explosion hazard!
- Never charge non-chargeable battery nor damaged battery.
- Store the charger at a dry and enclosed place and out of the reach of children.
- Never place a metal object in the charging area to avoid short circuit.
- If the charger is installed on the wall, please ensure the battery will not fall off the

charger due to external influences (such as vibration).

- This charger should not be used by persons with physical or intellectual disabilities, or those who are not trained nor have relevant knowledge, unless there is a safety monitor at the site to monitor the entire process and/or a safety monitor instructing them how to use the charger.

4.2.2 Quick chargeable battery

Note:

Please observe the following safety precautions to avoid electric shock, injury and/or fire:

- Do not insert a contaminated or wet battery into the charger.
- Never discard the battery in a trash can, do not throw it into fire or water!

4.3 Charge

- Charge the battery from “GOEBEL” only when the temperature is between -5°C / 23°F and 55°C / 130°F
- Please take the charger out of the package and plug it into the power supply. Insert the “GOEBEL” battery into the charger correctly, please mind the direction of electrodes. Push a little bit harder when inserting the battery. If put in correctly it will be charged automatically.

Function indicator

Signal	Meaning	Measures
Green light stays on	Battery full / trickle charging	Not any
Green light blinks	Charging	Not any
Red light stays on	Abnormal charging temperature (the battery is too hot or too cold)	Charging must be ended if it's outside normal temperature range (0°C/32°F - 45°C/110°F)
Red light blinks	Poor contact in the charger plug, battery damage or battery error (outsourced product)	Check if the plug contact is poor. If yes, please adjust the plug until the contact is established. Otherwise, the battery or charger are damaged. The battery or charger can no longer be used and the charging must be terminated. Replace the damaged item.

4.4 Battery

- Put the battery in. If the LED of the failure indicator cover (9) (*GO-400 figA*) blinks red and then goes out, it indicates that the power is on and the tool is working normally. Check battery level:
- When the blue LED digital indicator on the battery level display stays on, you can check the power of the tool:
- 4 LED indicators are on, the power is $95\% \pm 5\%$;
- 3 LED indicators are on, the power is $75\% \pm 5\%$;
- 2 LED indicators are on, the power is $50\% \pm 5\%$;
- 1 LED indicator is on, the power is $25\% \pm 5\%$, charging is recommended.
- With an over-discharge protection (ECP), the “GOEBEL” battery can repeatedly be charged for about 1000 times.
- The battery can be inserted only after cooling down properly.
- Do not charge the battery each time after using the tool.
- If the battery is working for significantly shorter periods of time after a recharge, it needs to be replaced.
- Do not allow the battery to be frozen. Store it in a dry place. The ideal operating temperature is $10^{\circ}\text{C}/50^{\circ}\text{F}$ - $50^{\circ}\text{C}/120^{\circ}\text{F}$

4.5 Safety rules for using the charger

- Make sure the charger and its power cord are intact before charging;
- Use a power cord that matches the charger;
- Do not charge in a humid environment, near open fire, in presence of flammable materials or flammable gases to avoid explosion;

4.6 Safety rules for using battery

- If the tool is not in use for a long term, the battery must be removed from the tool;
- Never charge a damaged battery and/or a contaminated or damp battery;
- Do not throw the battery into water or fire at any time, do not discard the battery with household waste;
- Do not charge when the environment temperature is lower than 0°C / 32°F or higher than 45°C / 110°F ;

5. Maintenance and repair

5.1 Maintenance

- Only have the rivet tool serviced when it is necessary. Worn nosepieces and nose housings must be replaced (refer to key point 3.1).
- Regular maintenance can extend the life of the high quality “GOEBEL” lithium-ion tool. Maintenance of the tool should be carried out by approved maintenance workshop or GOEBEL service center at least once every two years. If the tool is used frequently, maintenance within a shorter interval is recommended.

5.2 Repair

- In principle, manufacturer should be responsible for warranty. If the warranty has been expired, maintenance should be done only by professionals. If the rules for installation and adjustment are not obeyed or the tool is not used in a proper way, the rivet tool may be damaged seriously. If there are any problems, please mail the tool to the GOEBEL Service Center or the provider.

6. Environmental protection

If the battery must be replaced, please follow the rules below:

- Please returned the used “GOEBEL” battery to the GOEBEL Service Center or the provider.
- Never discard the used battery in the trash can, never throw it into fire or water!

7. Daily maintenance

In order to maintain the proper working condition of the tool, please check each parts of the tool regularly. If any parts are worn or damaged, please contact your dealer to purchase a new one or repair the damaged parts.

8. Safety usage

Very important! In order to ensure electrical safety, avoid injury and fire, please observe the following safety rules for tool usage!

- The tool is designed only for riveting pin and collar lockbolt style fasteners rather than other purposes like hammer etc.;
- Do not overload the tool; please use it inside the specified working scope;
- Do not expose the tool to humidity or rain; do not use the tool in humid or high-temperature conditions; do not use it near open fire or flammable materials and gases;
- When using the operation hook of the tool, please ensure the tool is hanged securely;
- When the tool is not in use, or in maintenance and repair, please remove the battery;
- When the tool is not in use, please keep it in the package box and store it at a dry place and out of the reach of children;
- When using the tool, an operator must wear eye protection, remove helmet, gloves and other necessary personal protective equipment;
- When using the tool, please ensure the vents are not clogged; do not insert anything into the vents;
 - Have the tool serviced and repaired by using original parts provided by dealers approved by “GOEBEL”;
- Maintenance technicians must be professional; if there are any difficulties, please make sure to mail it to approved dealers or manufacturer for repair;

- No operations should be done outside the rivet hole after screwing a rivet nut; do not point the tool at yourself, others or animals;
- The tool can prevent a rivet nut from coming out during pre-installation and riveting test to prevent hurting human beings or animals!

9. Warranty and CE certification

9.1 Warranty period and maintenance support

- Lifelong after-sales service is provided to products of our company. If a manufacturing quality problem is found during usage, it will be covered by the warranty.
- The warranty has a validity of 12 months, as of the date indicated on the sales invoice.
- The warranty does not cover wearing due to normal usage, damage caused by overload, improper usage or human mistakes.
- In case of any quality problems of the tool, repair and replacement occurring within warranty period will be free of charge.
- Free repair and replacement within warranty period is only valid for the entire tool. Wearing parts are not covered by the warranty.
- The manufacturer is not responsible for quality problems caused by improper usage, including damage or failure caused by storage, accident, misusing, misoperation, or unmatched equipment. Maximum liability for compensation is not higher than the value of the tool itself, not including relevant components.
- In case of any problems, please contact your local dealers or contact GOEBEL directly for support.

9.2 CE certification authenticity

Declaration of **CE** conformity

We hereby declare that the battery tool complies to the following standards and standard documents if it is used properly according to the instruction EN 55014-1, en55014-2, 2004/108/EC and 2006/42/CE regulations.



**CE Declaration of conformity
Accu Tools**

CE - Declaration ofC onformity

In accordance with the EEC machinery directive 2006/42/EG of 17. May 2006, appendix II A

We hereby certify that the following described machine in it's conception, construction and form put by us into circulation is in accordance with all the relevant essential health and safety requirements of the EC machinery directive 2006/42/EEC as amended and the national laws and regulations adopting this directive.

This declaration is no longer valid if the machine is modified without our consent.

Manufacturers name or of his representative:

Goebel GmbH, Muehlenstr. 2-4 D-40699 Erkrath

Description of the machine:

Hand-Hold Electric-Powered Riveting Tool

Model: GO-300

The agreement with further valid guidelines/regulations following for the product is explained:

- 2006/42/EU
- 2014/34/EU
- 2014/30/EU
- 2014/35/EU (for charger)

Applied on harmonized standards in particular:

- EN 55014-1:2006+A2:2011
- EN 55014-2:1997+A2:2008
- EN 62841
- EN 60335

Authorized person for the technical documentation:

Guido Kramme, Quality Management, Goebel GmbH


Personal data of the signer:

General Manager, CEO Marcel Goebel

Place/date:

Erkrath, 28th of Nov.2 018

Signature:



Managing Director, Marcel Goebel

Quality The First Time



GOEBEL FASTENERS INC.

5650 GUHN ROAD. SUITE 110

HOUSTON, TX 77040

PHONE: + 1 (713) 393 7007

SALES@GOEBELFASTENERS.COM

www.goebelfasteners.com

February 2020